

ColorPartner is a developer and manufacturer of colour measurement devices, laser distance measurement systems, wire winding systems and associated accessories. ColorPartner was founded in 1993. Initial products were image and PostScript PC-interface systems for all kind of high end scanners.

Today we are producing in a broad range of industries: printing, wire, textile, chemical and ceramics industries. Wherever electronic and optical know how is necessary.

Our colour measurement products are used and known worldwide.

Persons of contact:

Mr. Wolfgang Schulz	<WS@colorpartner.de>	managing director
Mr. Ingmar Brumm	<IB@colorpartner.de>	managing director
Mr. Karsten Höfer	<KH@colorpartner.de>	production manager

ColorPartner GmbH
Holzkoppelweg 5
24118 Kiel
Germany

Phone: ++49-431-200878-0
Fax: ++49-431-200878-9
Email: info@ColorPartner.de
Internet: www.ColorPartner.de



ColorScout AX and ColorScout AXT

The ColorScout AX is a high speed, high precision automatic chart scanspectrophotometer on air cushion basis with air cooled high performance optical light probe. This air cushion technology ensures a preservative treatment of the charts. The continuous airflow also helps to keep the charts free from dust.

The scanning time for the IT8.7/3 chart with 928 patches is about 4.5 min, for the ECI2002 chart with 1485 patches it is about 7 min. The charts can be designed in any format.

The ColorScout AX is available in the following standard sizes **A3+**, **A2+** and **750 mm x 1050 mm**, also we manufacture other sizes on request.

The standard size of the transmission option of the ColorScout AXT is A3+.

Technical Data of the ColorScout AX

Measuring time:

IT8.7/3 target	approximately 4.5 min for 928 patches
ECI 2002 target	approximately 7.0 min for 1485 patches

Technical Data of the spectrometer part

Spectral module	monolithic spectrometer module with focussing echelette diffraction grating, quartz fiber optic, 256 elements photo diode line, 16 bit A/D-conversion, no moving parts
Spectral range	380 to 780nm
Optical resolution	9 nm (3.5 nm sampling resolution)
Modi	remission, optionally transmission (AXT)
Sensor geometry	45/0° circular illumination optics
Aperture diameter	3.5 mm
Light source	tungsten, gas filled, illumination type A

Measuring time:

remission	< 0.1 s (< 0.3 s positioning included)
transmission	< 1.0 s (< 1.3 s positioning included)
Measuring range	density DIN 16536: D 0.0 - 2.5
Inter-instrument agreement	typical 0.4 dE on BCRA tiles
Linearity	±0.01 D
Short term repeatability	±0.03 dE across 10 measurements on white
Density repeatability	±0.01 D

Measuring parameters

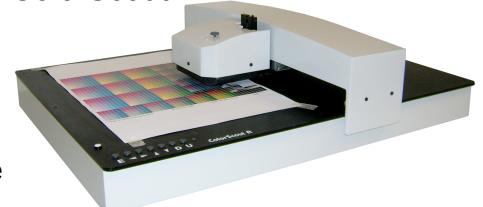
White reference	absolute, relative
Illumination type	A, B, C, E, D50, D55, D65, D75, arbitrary Dxx-illumination, G, P, Xe, F1 .. F12
Observation angle	2°, 10°
Density norms	DIN 16536, DIN 16536-NB, ANSI Status A, ANSI Status T, ANSI Status E, ANSI Status M, ANSI Status I
Colour metrics	CIE-XYZ, CIE-Lab, CIE-xyY, CIE-Luv

Supplied software **ColorChart**

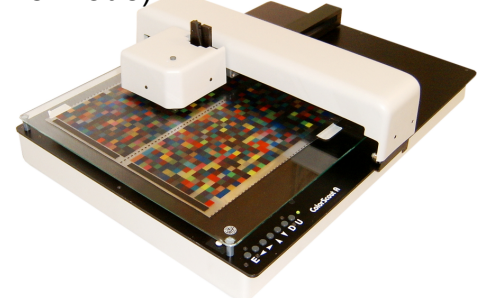
requires Windows 95/98, NT 4.0

Following functionalities and data are implemented: Density, L*a*b*, dE*, XYZ, xyY, adjustment of slope and Yule-Nielsen factor, Supports color profiling, Reading of charts (e.g. IT8.7/3-Charts, ECI2002-Charts) automatically, Creating charts, Excel interface, barcode reader support, ...

ColorScout AX



ColorScout AXT (in transmissive mode)



ColorScout AX in 750 mm X 1050 mm format



ColorScout A+

The ColorScout A+ is a **XY measuring table**, that can **auto-mate** all your measurements you do manually now. This gives you more **safety** and frees you for other things to do.

It is best used in applications, where you have to measure many patches (even multiple measurements for averaging) on a target.

These targets can be printed sheets of **paper, textiles, ceramics** or **metals**. There are many areas, where it can be used.

It is not only used for measuring colourimetric values, but also gloss, haze, thickness and others.

It is available in the standard sizes **A3+**, **A2+** and **750 mm x 1050 mm**, also we manufacture other sizes on request. Standard maximum measurement height (material thickness) is 30 mm.

Our free software **ColorChart** for easily creating and measuring charts has a rich featured Excel interface including macro call. If there is any function, you would like to see in **ColorChart**, please contact us.

The **ColorScout A+** has already been **successfully** installed at many customer sites like Agfa, Armstrong World Industries, AVA CAD/CAM, Bayer, CM/PCM -Services, Dai Nippon Printing, Donnelley Europe, Ecolab, Ergo-Soft, Euro Digital, Color Solutions, Henkel, Hollanders Printing Systems, NexPress, Océ, Stork, Sun Chemical, Wide Gamut, Xerox, X-Rite, Zumbel Staff, ...

Here is a shortened list of the devices sorted by brands, which are supported by the ColorScout A+ (**full list** on the website):

Byk-Gardner:

old micro tri gloss
new micro TRI
gloss
color guide
spectro guide

Datacolor:

Mercury

GretagMacbeth:

Spectrolino
EyeOne
SpectroEye

X-Rite:

SP61, SP62, SP64
962, 964, 939
938, 948, 968
504, 508, 518, 520,
528, 530

ColorPartner:

ColorScout S
ColorScout AX
ColorScout AXT

KonicaMinolta:

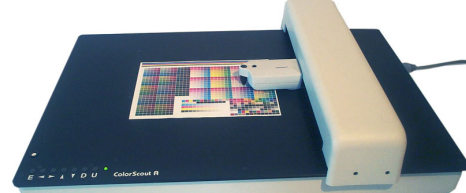
CM-2500c
CM-2500d
CM-2600d

Others:

full list on website

If you miss any device on the list, please don't hesitate to contact us! We adapt further devices on request.

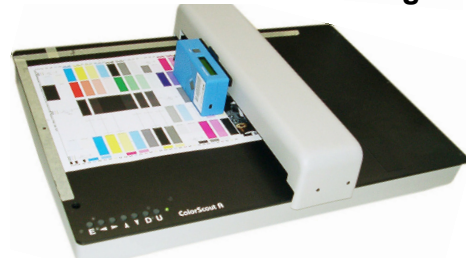
ColorScout A+ for **ColorScout S**



ColorScout A+ for **Spectrolino**



ColorScout A+ for **micro tri gloss**



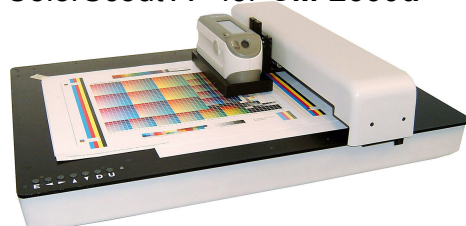
ColorScout A+ for **Mercury**



ColorScout A+ for **EyeOne**



ColorScout A+ for **CM-2600d**



ColorScout A+ for **SP64**



ColorScout A+ for **SpectroEye**



DigiDens-Densitometer-Family

The densitometers to measure:

- bw-reflection and -transmission
- colour-reflection and bw-transmission

Available:

- with or without light source for transmission
- with or without serial interface

2.5 and 3.3 mm apertures are available.

For more information, please see our website!

DigiDens T6R



DigiDens T6RL



DigiDens T6CR



Primary and secondary color reference!

The ColorReference12 can be used to compare, check and calibrate colour measuring instruments. This is e.g. a reference to compare spectrophotometers. The primary reference is certificated by the BAM (Bundesamt für Materialforschung und -prüfung / Federal Institute for Materials Research and Testing).

The ColorReference12 consists of 12 particularly selecte ageresisting, volumestraypoor colors.



This brochure has been supplied to you by: